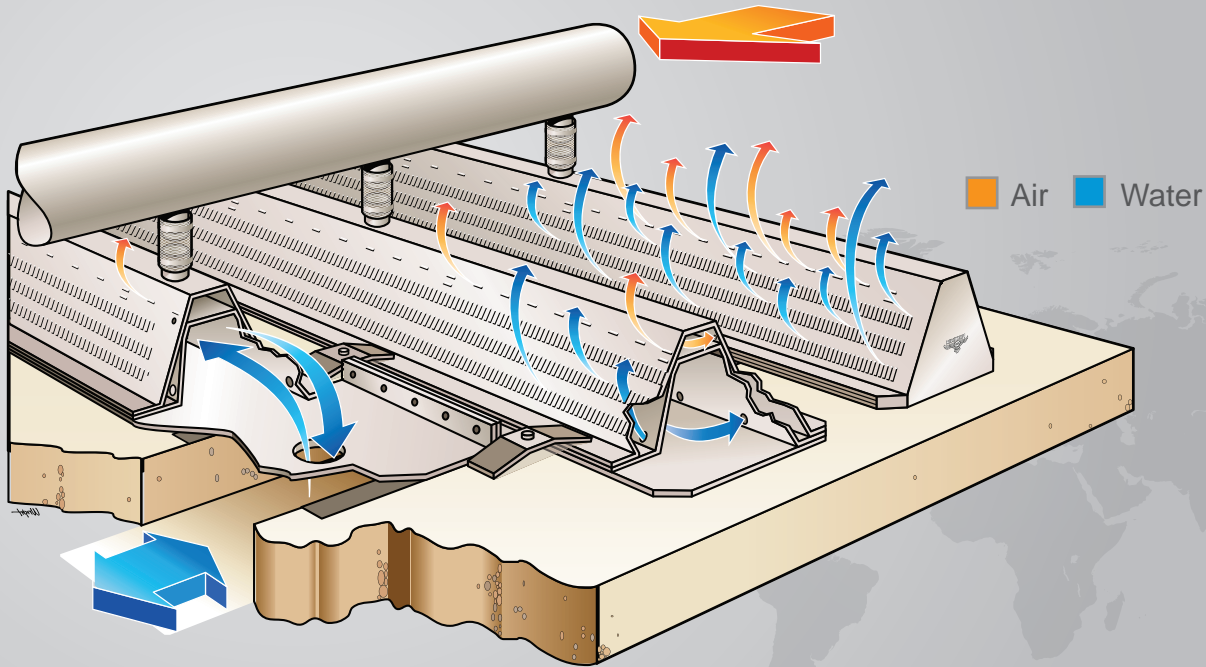




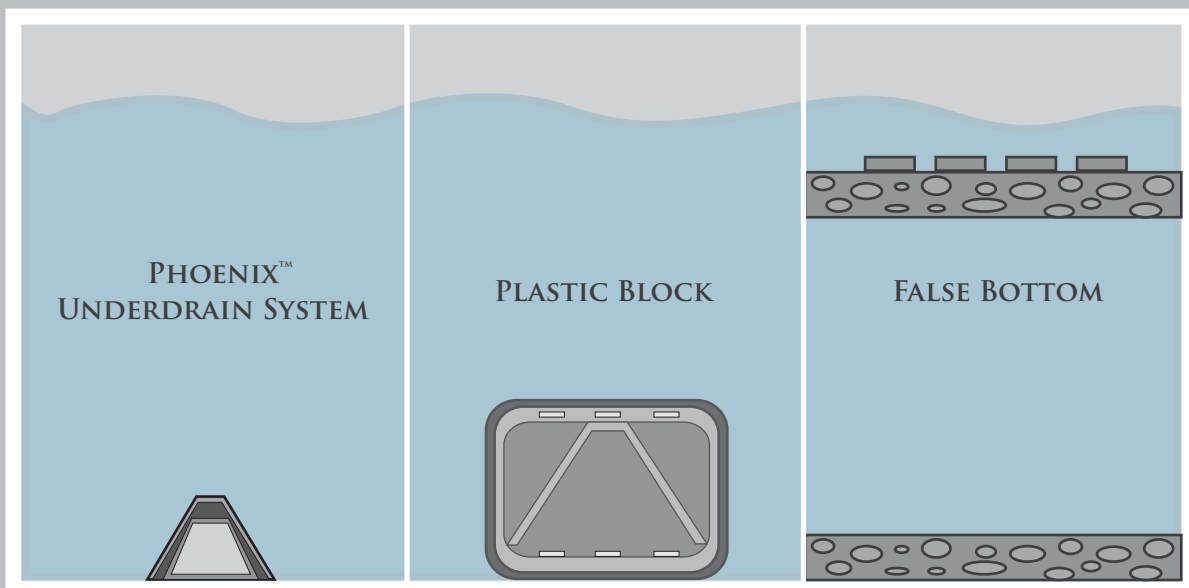
# THE PHOENIX™ UNDERDRAIN SYSTEM — LATERALS —



## PHOENIX™ LATERALS

- ✓ Complete, custom designed underdrain system
- ✓ Guaranteed uniform distribution
- ✓ Rapid, low cost installation
- ✓ Integral air scour chamber
- ✓ Optimizes both gravity and pressure filter performance
- ✓ Durable stainless steel construction

— LOWEST PROFILE AVAILABLE —





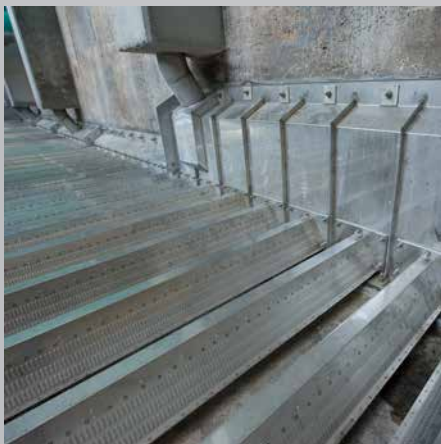
# THE PHOENIX™ UNDERDRAIN SYSTEM

## ONE SIZE DOES NOT FIT ALL!

To ensure uniform distribution, each Phoenix™ lateral component is tailored to existing filter conditions using AWI's proprietary hydraulic orifice sizing technique.



The Phoenix™ Underdrain is a complete system designed for all types of filters. Here is a typical gullet installation in a new filter with a 3 foot wide gullet. AWI is the only manufacturer that can accommodate a gullet width greater than 2 feet.



This filter retrofit feeds backwash water along the 50' wall. The custom designed feed box permitted the addition of more media than any other design, while distributing backwash water to the section of the feed wall that was not connected to the backwash supply.



This is a custom retrofit of an Aldrich unit. The retrofit increased the depth of the filter media and added air scour. The available filtration area was doubled.